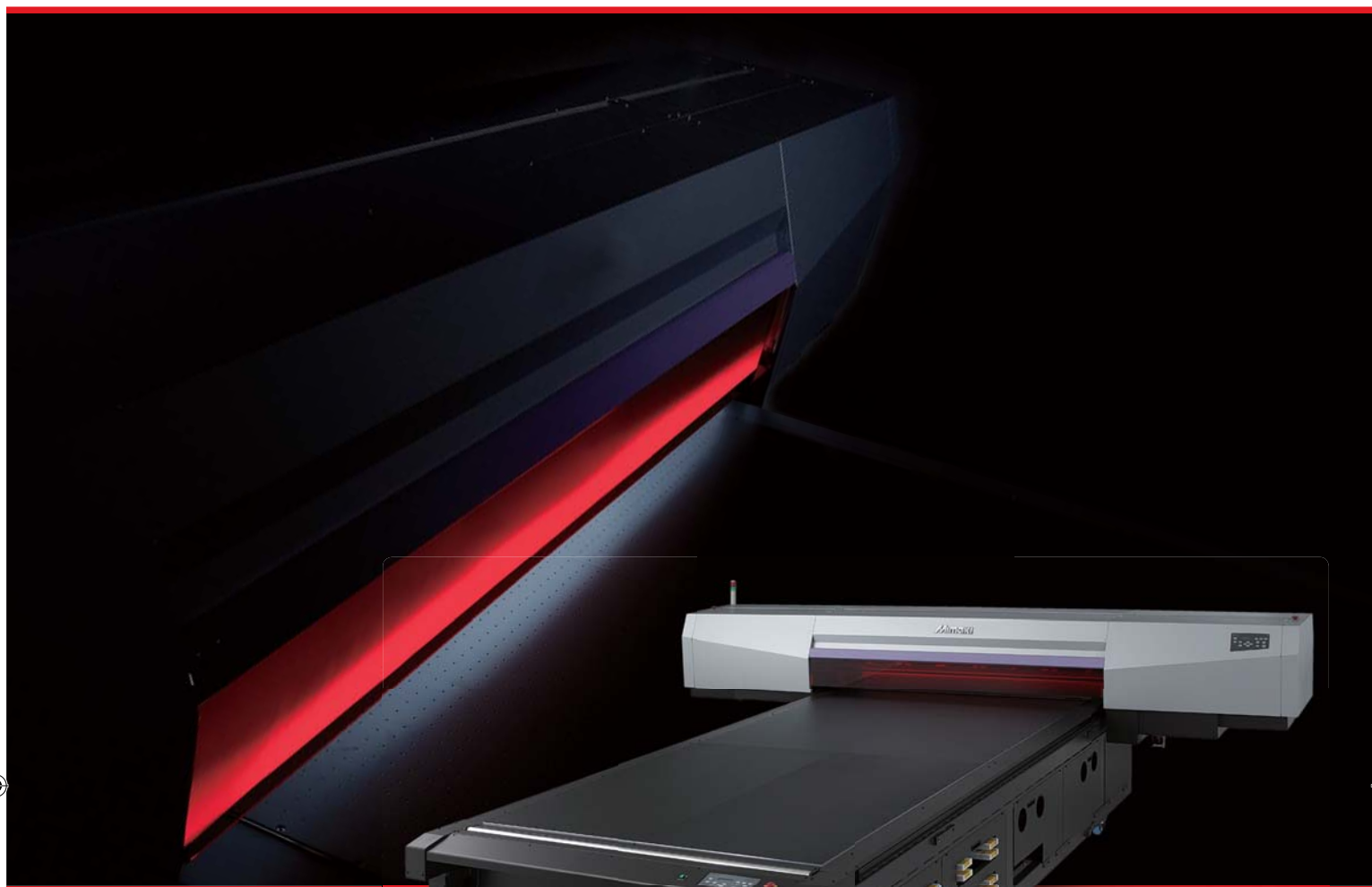


JFX-1631

Mimaki



UV LED Curable

Flexible / hard Ink

160 x 310 cm
PRINT AREA

5 cm
MAX. MEDIA THICKNESS

1200 DPI
MAX. RESOLUTION

4 COLOURS + WHITE

Print on
heat sensitive media

No UV lamp
warm up time



Revolutionary new technology

Innovative UV LED Flatbed Inkjet Printer

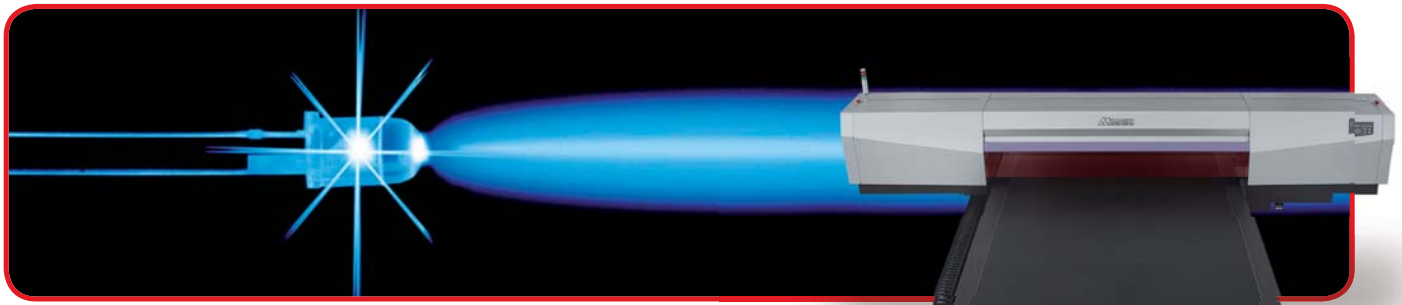
Higher precision, faster operation and broader
selection of media

MARKET

SIGN GRAPHICS

INDUSTRIAL PRODUCTS

Expanding business opportunities with innovation



UV LED Printing – New Technology, New Benefits

- ✓ Problem-free printing on heat sensitive media
- ✓ Faster operation – no UV lamp warm up time
- ✓ UV LEDs last 5000 hours
- ✓ No drying time
- ✓ Less energy consumption, low VOC's and no ozone

• Two types of ink for a broader selection of media

Types of Ink	LF-200 Flexible UV Ink	LH-100 Hard UV Ink
Features	- 200% elasticity* - Suitable for media that can be bent	- High scratch resistance and chemical resistance
Applications (White ink for coloured and transparent media)	Suitable for: - Embossing processes such as membrane switches - Packages (also transparent materials)	Suitable for: - Different kinds of aluminium and plastic type of boards - Backlit film - Transparent materials such as glass and plastic - Various name plates (metal, resin)

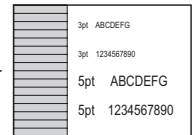
* Elasticity of LF-200 varies depending on the type of media

• High precision, high quality

JFX-1631 enables precise ink landing due to the accurate Y-bar moving mechanism that utilises linear scales. Moreover, it can achieve 3pt-sized readable letters.

• For large and smaller substrates

JFX-1631 is suitable for directly printing on large and thick (up to 5 cm) uncoated substrates or many smaller items, including signs, cards, art/photo reproduction, membrane switches and more. It also supports heavy media, such as metal and glass plates.



Each scale indicates 1 mm

Specifications

Item	Specifications	
Head	On-demand Piezo head	
Print resolution	600 x 600 dpi, 600 x 1200 dpi, 1200 x 1200 dpi	
Ink	UV curable ink (Both flexible and hard types are available) 5 colours: Y / M / C / K / W	
Maximum print width	Width: 1,602 mm (63.1"), Length: 3,100 mm (122")	
Print accuracy	Absolute accuracy: ± 0.3 mm (0.01") or ± 0.3 % from specific print distance Reproduction: ± 0.2 mm (0.01") or ± 0.1 % from specific print distance	
Perpendicularity	± 0.5 mm / 500 mm	
Media cutting	Width: 1,694 x 3,194 mm (66.7" x 125.7") Thickness: Max. 50 mm (1.97") Weight: Less than 50 kg (110 lbs.)	
Media set device	Air suction by vacuum	
UV device	Equipped with UV lamps	
Command	MRL-III, MGL-IIc2	
Interface	USB 2.0	
Applicable standard	VCCI class A, CE Marking, CB Report, UL, RoHS Directive	
Power specifications	AC200 - 240 V, Less than 2.0 kVA	
Operational environment	Temperature	15 - 30°C, (59 - 86°F)
	Humidity	35 - 65% Rh (No condensation)
	Accuracy guarantee temperature	18 - 25°C, (64 - 77°F)
	Temperature gradient	Less than $\pm 10^\circ\text{C/h}$ (18° F)
	Dust	Equivalent to normal office level
Dimensions (WxDxH)	4,200 x 4,300 x 1,600 mm (165.4" x 169.3" x 63.0")	
Weight	1600 kg (3,527.4 lbs.)	

Supplies

Item	Colour	Item No.	Remarks
LF-200 flexible UV ink	C/M/Y/K/W	SPC-0591XX	Contained in 600 cc ink pack
LH-100 hard UV ink	C/M/Y/K/W	SPC-0597XX	Contained in 600 cc ink pack
Ionizer kit		OPT-J0213	1 kit for each printer
Blower unit (3ø)		OPT-J0216	3-phase: 200-240V, 30A, 3.4kW
Blower unit (3ø)		OPT-J0232	3-phase: 380-480V, 20A, 3.4kW
Blower unit (1ø)		OPT-J0217	1-phase: 200-240V, 30A, 1.9kW
Interface for external blower		OPT-J0202	1-phase / 3-phase: 200-240V, 30A, 3.4kW

- A blower unit is not included in JFX-1631. Please purchase the blower unit separately.
- Additional power source is required in order to use the blower unit.
- The blower unit includes an external blower interface unit (OPT-J0202).

Notice on materials and ink performance

- Post-printing ink property performance (adhesion, weather durability, etc.) varies according to material. Please test the material first to ensure print quality.
- Undercoating (with primer, etc.) or surface treatment (with laminate processing, etc.) of materials is necessary, depending on their use.

• Some of the samples in this folder are artificial renderings • Specifications, design and dimensions stated in this folder may be subject to change without notice (for technical improvements, etc.) • The corporate and merchandise names written on this folder are the trademark of the respective corporations • Inkjet printers print using extreme fine dots, so colours may vary after replacement of the printing heads, also note that if using multiple printer units, colours could vary slightly from one unit to other unit due to slight individual differences • Compositor's errors reserved

MIMAKI EUROPE B.V.

Stammerdijk 7E 1112 AA
Diemen, The Netherlands
Tel: +31-20-4627-642

info@mimakieurope.com www.mimakieurope.com



01753 727128

www.g-p-t.co.uk